

# PROPOSED CHILD CARE CENTRE DEVELOPMENT

## 8 CHARLTON AVENUE TURRAMURRA, NSW 2074

### LANDSCAPE CONCEPT DESIGN

#### DRAWING LIST -

SHEET:	TITLE:
G721_LP_00	COVER SHEET
G721_LP_01	COUNCIL MAPPING & CONTEXT
G721_LP_02	TREE RETENTION & REMOVAL PLAN
G721_LP_03	LANDSCAPE CONCEPT PLAN - LOWER GROUND FLOOR
G721_LP_04	LANDSCAPE CONCEPT PLAN - GROUND FLOOR
G721_LP_05	LANDSCAPE CONCEPT PLAN - LEVEL 01
G721_LP_06	LANDSCAPE PLANTING PLAN - LOWER GROUND FLOOR
G721_LP_07	LANDSCAPE PLANTING PLAN - GROUND FLOOR
G721_LP_08	LANDSCAPE PLANTING PLAN - LEVEL 01
G721_LP_09	FENCING ARRANGEMENT PLAN
G721_LP_10	LANDSCAPE CHARACTER IMAGERY
G721_LP_11	PLANTING IMAGERY
G721_LP_12	NOTES & PRELIMINARY SPECIFICATION
G721_LP_13	CONSTRUCTION DETAILS

### LANDSCAPE DESIGN STATEMENT

The intent of the landscape design is to create functional and highly robust landscape that contributes positively to the local landscape character, provides a high level of amenity and allows children to safely explore and experience the natural environment. The landscape design also aims to deliver consistent planning outcomes and design quality for centre-based child care facilities in accordance with the NSW Child Care Planning Guideline 2021 and the Ku-ring-gai Council *DCP Part 10 - Child Care Centres*.

Minimum requirements for unencumbered outdoor play space have been achieved with the design tailored to provide a variety of experiences that facilitate the development of cognitive and physical skills, provide opportunities for social interaction and appreciation of the natural environment. In addition, there has been a focus to enhance outdoor learning, socialisation and recreation by positioning outdoor furniture and play equipment in configurations that facilitate interaction.

Design details, finishes and materials will be complimentary to the architectural style to provide visual consistency throughout the development whilst being low-maintenance and hard wearing to reflect the intended use. The softscape palette has been selected in response to the climatic conditions of the local area with the planting hierarchy reflecting Crime Prevention through Environmental Design (CPTED) principles. A balance of sunlight and shade have been provided to play areas to ensure the health and wellbeing of children and staff with a combination of built and natural shade elements included throughout the play spaces in key locations.

Species have been selected based on their reliability and low maintenance characteristics. A focus has been given to the inclusion of locally endemic species where possible to compliment the landscape character of the area whilst also contribute to the local biodiversity. Where necessary, accent and exotic species have been utilised in key locations to achieve the desired planting effects, amenity and visual interest.

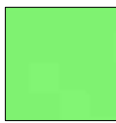
Landscape buffers and screen planting have been implemented to the boundary interfaces with adjoining allotments where possible and to provide a high level of visual and acoustic privacy, prevent overlooking as well as soften the built form to reduce any visual impact and contribute to the public amenity.








**KEY:**

 NATURAL RESOURCES - BIODIVERSITY

01 BIO-DIVERSITY MAPPING: KU-RING-GAI COUNCIL PLAN



**KEY:**

 CATEGORY 3 - LANDSCAPE REMNANT

02 GREEN WEB MAPPING: KU-RING-GAI COUNCIL PLAN

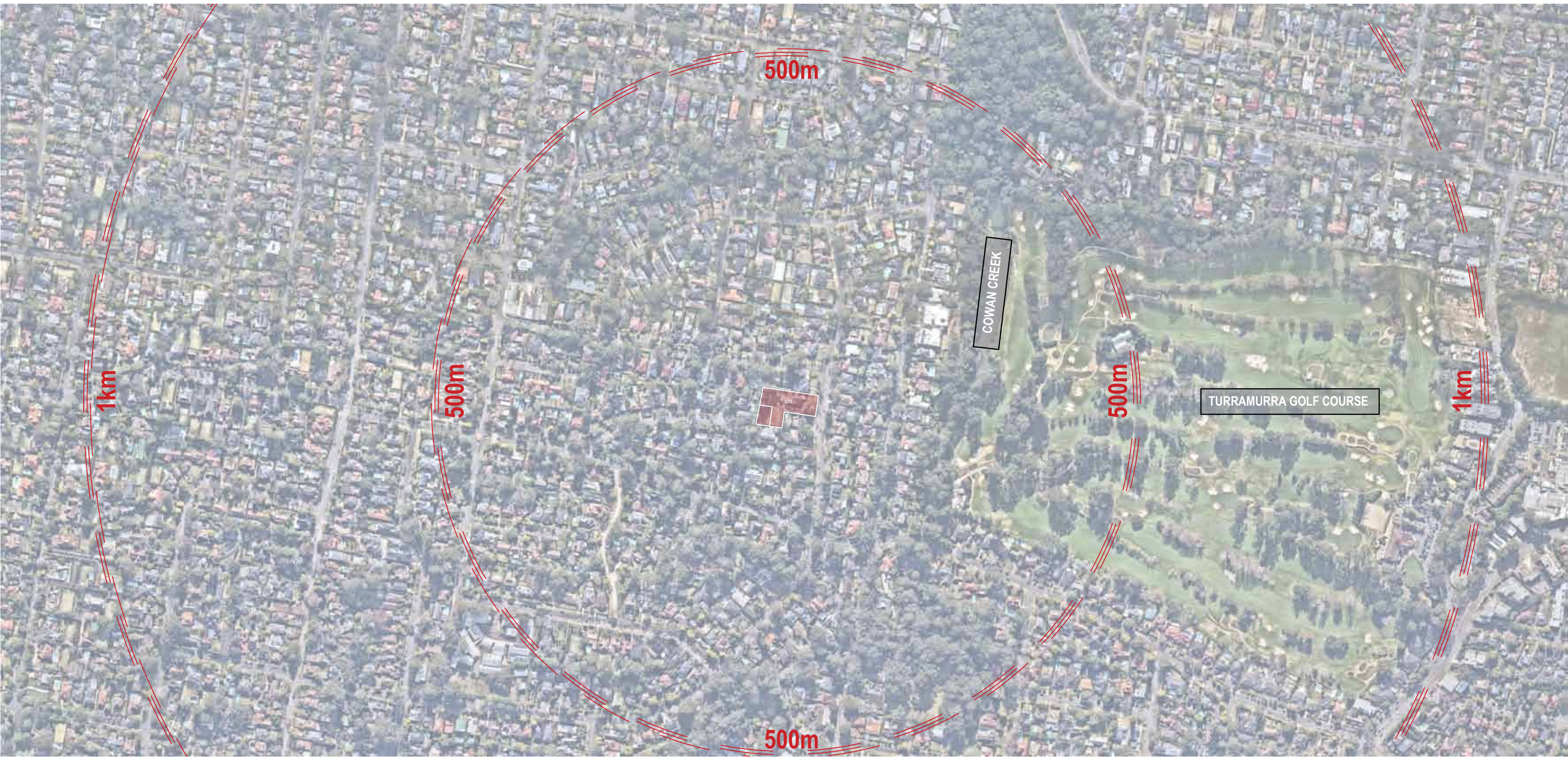


**KEY:**

 BLUE GUM HIGH FOREST

 OTHER VEGETATION

03 VEGETATION MAPPING: KU-RING-GAI COUNCIL PLAN



03 LOCAL CONTEXT AERIAL IMAGERY

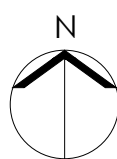
1:5000 @ A1



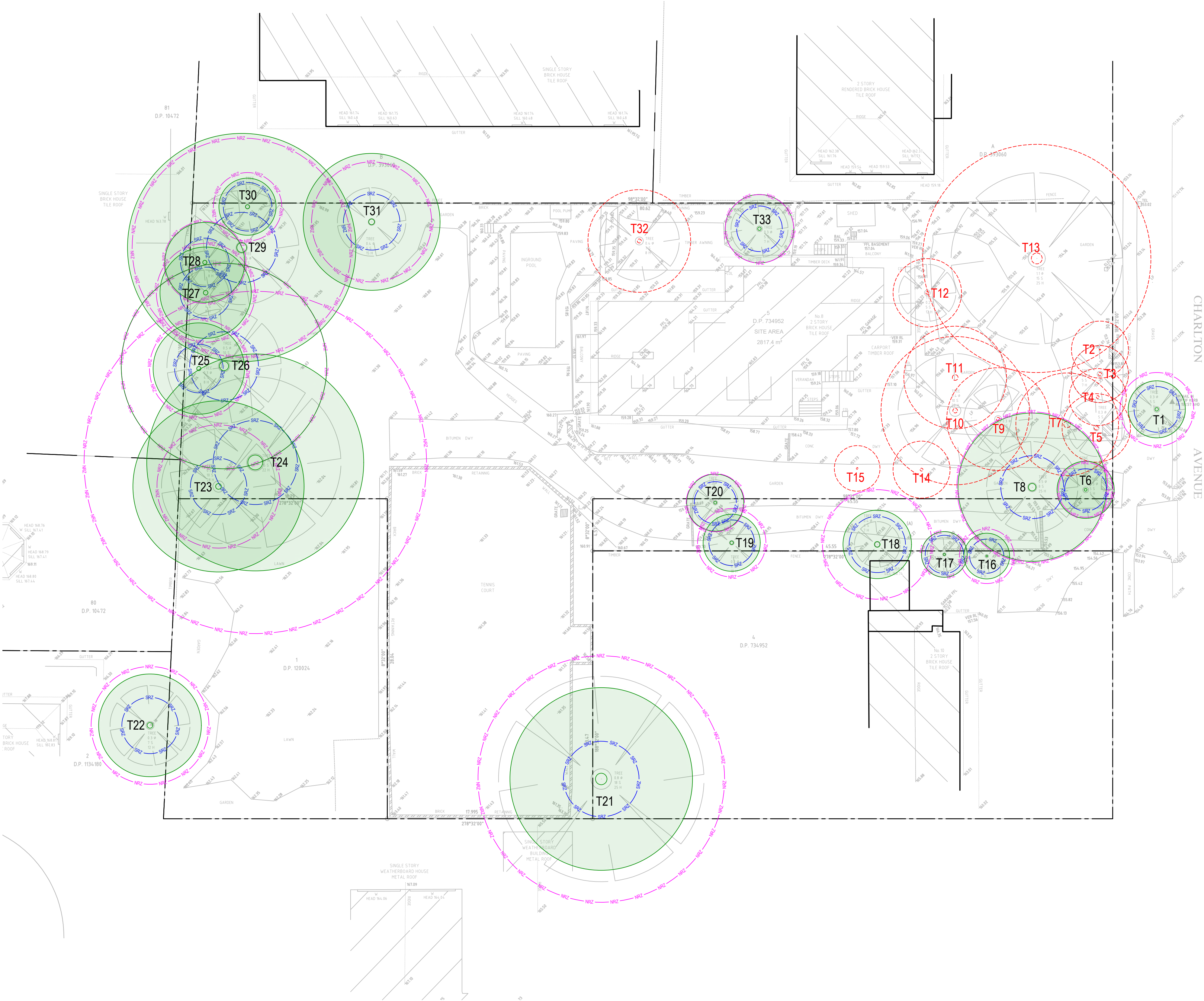
04 SITE CONTEXT AERIAL IMAGERY

1:1000 @ A1

Issue	Code	Issue Description	By	Chk	Date
C	CA	RFI UPDATES	NZ	GT	22.09.25
B	CA	FOR APPROVAL	NZ	GT	25.10.24
A	CA	FOR REVIEW	NZ	GT	09.10.24
PRE - Preliminary CA - Council Approval T - Tender CON - Construction					

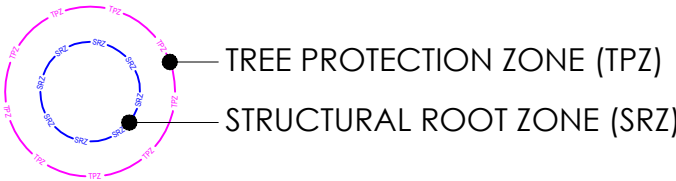
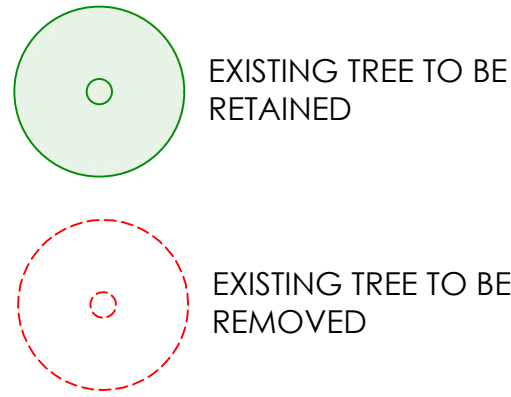




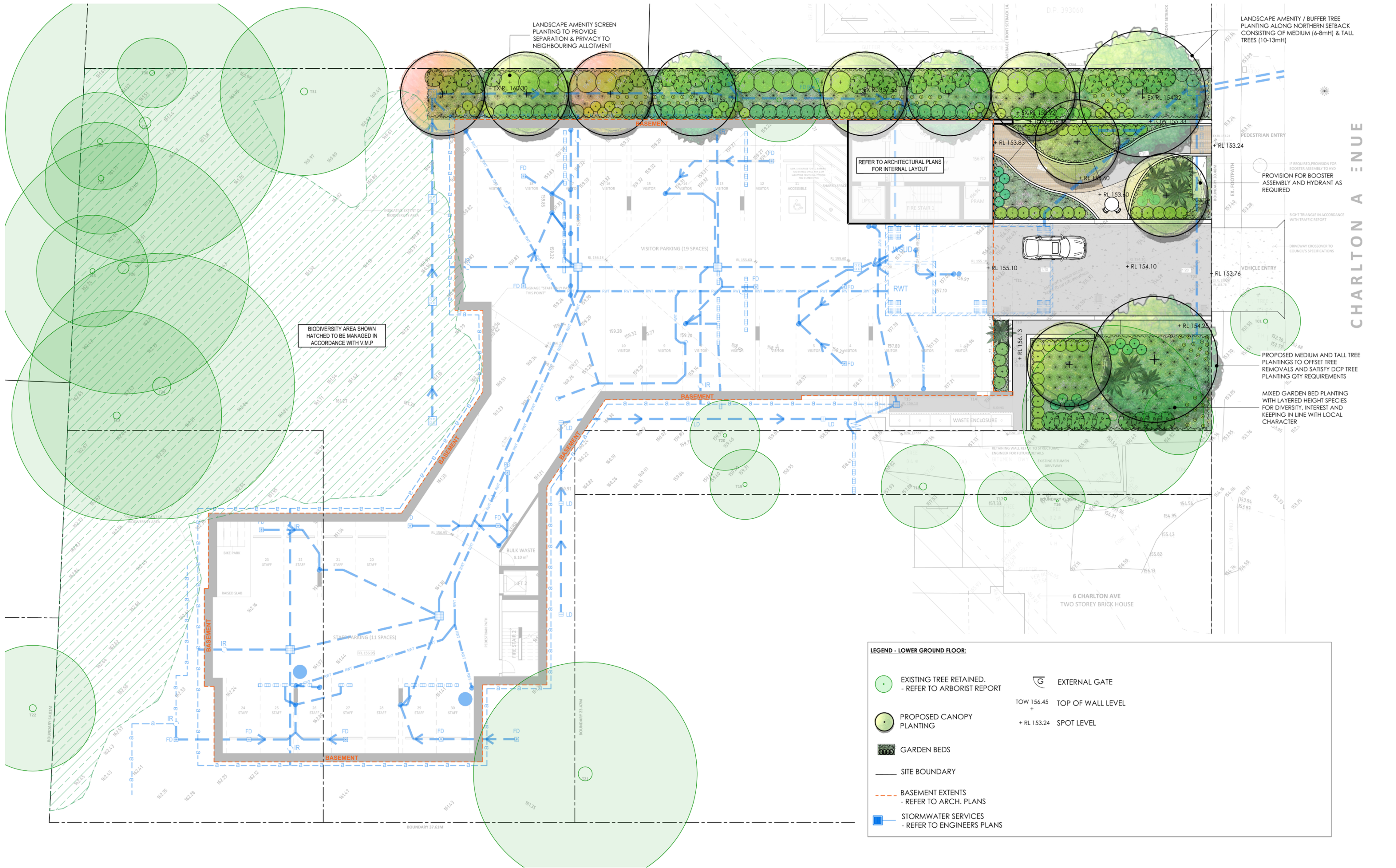


EXISTING TREE SCHEDULE							
Tree No.	Genus and Species	Common Name	Height	Crown Spread	TPZ Radius (m)	SRZ Radius (m)	Retain / Remove
1	Callistemon viminalis	Weeping Bottlebrush	6	5	3.2300	2.0000	Retain
2	Rogiera amoena	Rondeletia	5	5	2.0000	1.5000	Remove
3	Camellia sasanqua	Camellia	6	5	2.7500	2.0000	Remove
4	Camellia sasanqua	Camellia	6	5	2.7500	1.8500	Remove
5	Acer palmatum	Japanese Maple	7	6	3.4500	2.1300	Remove
6	Acer palmatum	Japanese Maple	6	5	2.4000	1.8500	Retain
7	Taxodium distichum	Swamp Cypress	20	9	6.0000	2.6700	Remove
8	Araucaria cunninghamii	Hoop Pine	20	13	6.6000	2.7600	Retain
9	Fraxinus sp.	Flowering Ash	9	9	3.3400	2.0000	Remove
10	Fraxinus sp.	Flowering Ash	16	13	4.2000	2.2500	Remove
11	Cupressus macrocarpa	Monterey Cypress	12	9	4.5300	2.4700	Remove
12	Cupressus sp.	Cypress	13	6	2.4000	1.8500	Remove
13	Liquidambar styraciflua	Sweetgum	18	20	10.5300	3.2400	Remove
14	Malus sp.	Crab Apple Cultivar	4	5	2.4000	1.8500	Remove
15	Olea europaea	European Olive	5	4	2.0000	1.5000	Remove
16	Callistemon viminalis	Weeping Bottlebrush	5	4	2.4000	1.5000	Retain
17	Camellia japonica	Camellia	5	4	2.0000	1.6800	Retain
18	X Cupressocyparis leylandii	Leyland Cypress	9	6	4.8000	2.4700	Retain
19	Banksia integrifolia	Coast Banksia	10	5	3.0000	2.0000	Retain
20	Hymenosporum flavum	Native Frangipani	9	5	2.5500	1.8500	Retain
21	Eucalyptus scoparia	Wallangarra White Gum	18	16	10.8000	3.3100	Retain
22	Jacaranda mimosifolia	Jacaranda	12	9	5.1600	2.4700	Retain
23	Corymbia citriodora	Lemon-scented Gum	20	15	5.4000	2.4700	Retain
24	Harpephyllum caffrum	Kaffir Plum	16	19	15.0000	3.6900	Retain
25	Jacaranda mimosifolia	Jacaranda	10	8	4.3300	2.1300	Retain
26	Eucalyptus microcorys	Tallowwood	20	18	9.0000	3.0100	Retain
27	Unknown species	-	11	8	4.3300	2.2500	Retain
28	Brachychiton acerifolius	Illawarra Flame Tree	12	7	3.6000	2.1300	Retain
29	Eucalyptus saligna	Sydney Blue Gum	23	20	9.6000	3.0900	Retain
30	Pittosporum undulatum	Sweet Pittosporum	6	5	3.0000	2.1300	Retain
31	Lophostemon confertus	Brush Box	15	12	5.2600	2.4700	Retain
32	Fraxinus excelsior 'Aurea'	Golden Ash	7	9	3.6000	2.1300	Remove
33	Magnolia x soulangeana	Saucer Magnolia	7	6	3.0000	2.0000	Retain

LEGEND



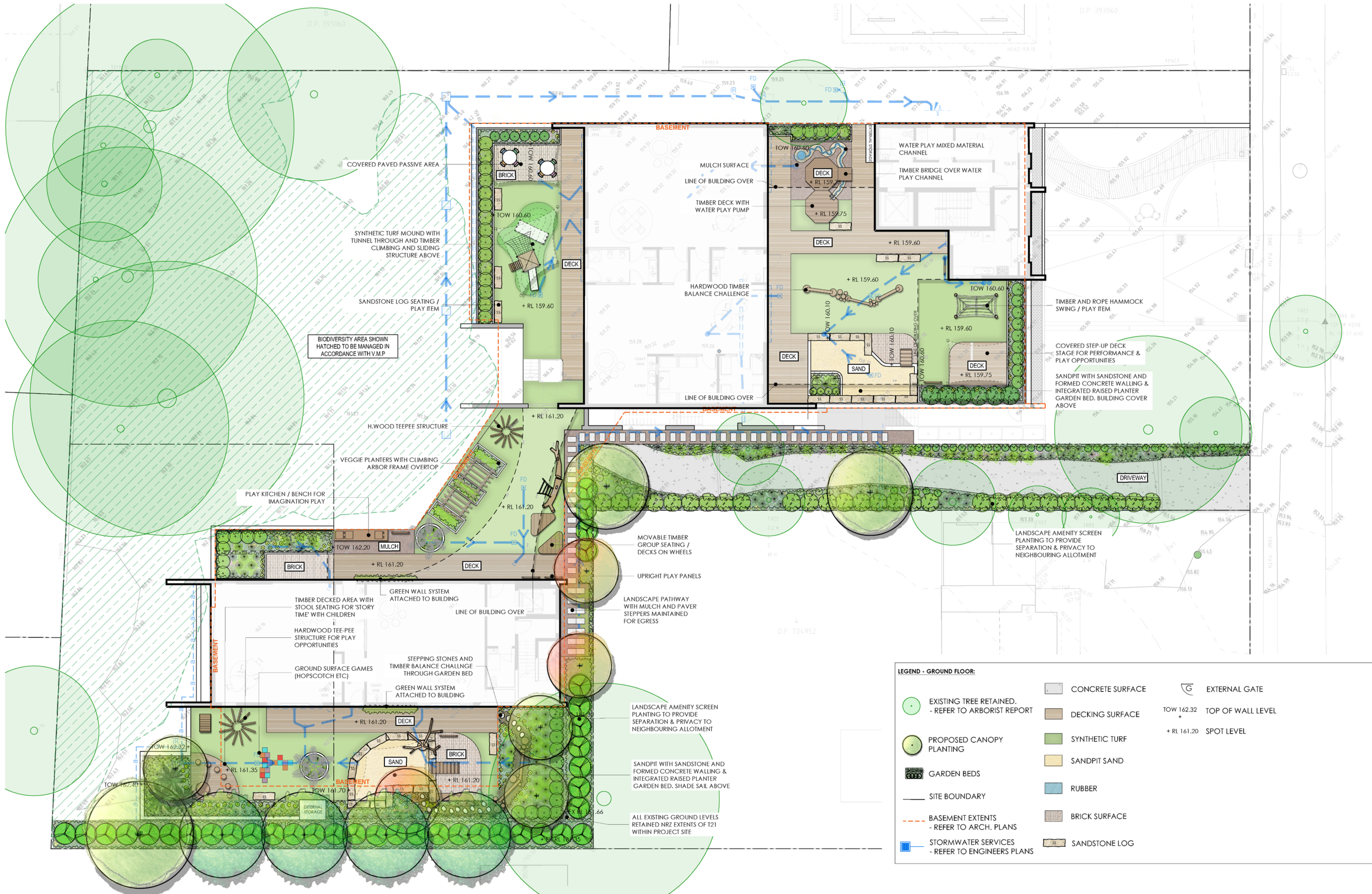




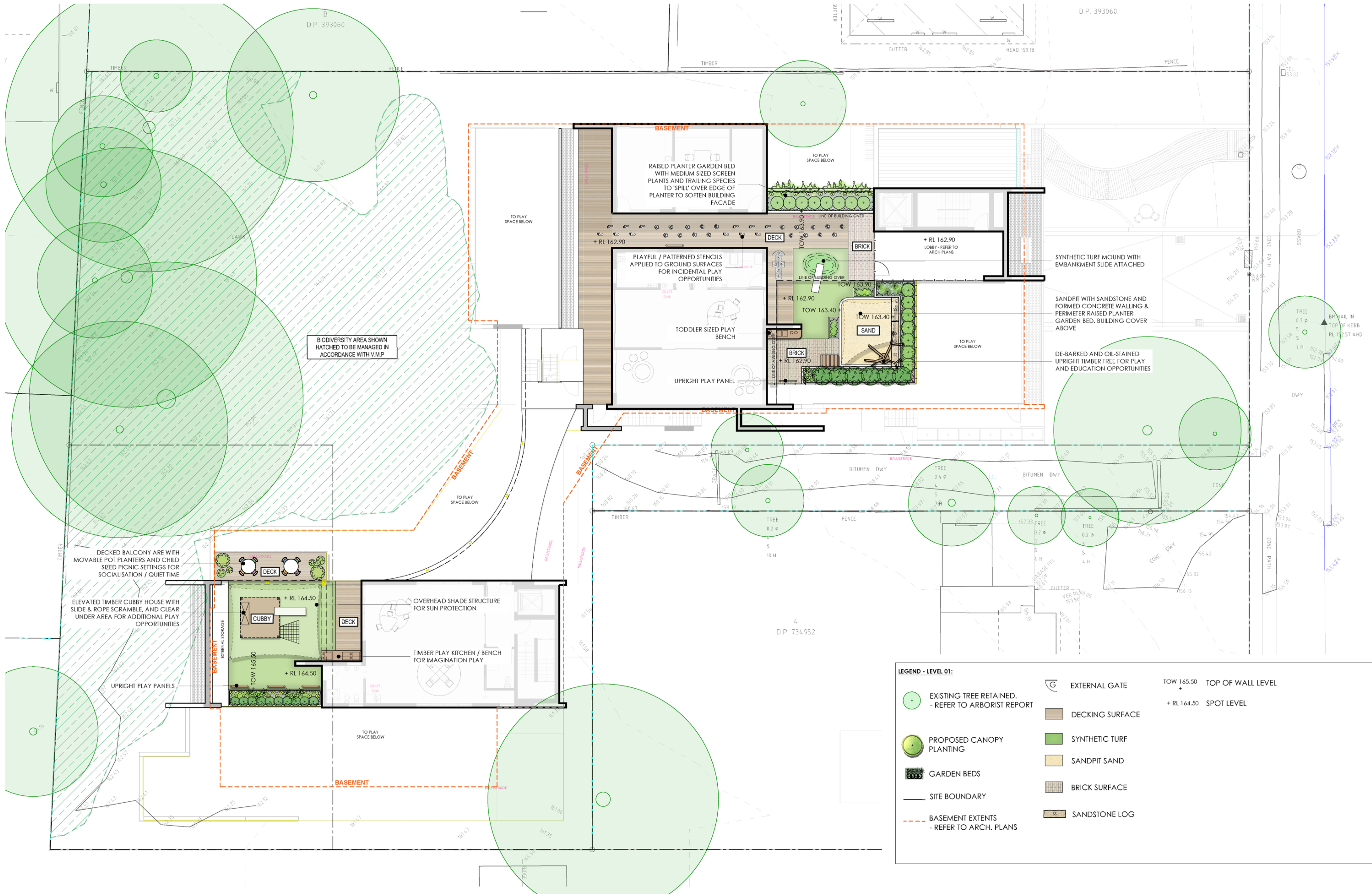
Issue	Code	Issue Description	By	Chk	Date
C	CA	RFI UPDATES	NZ	GT	22.09.25
B	CA	FOR APPROVAL	NZ	GT	25.10.24
A	CA	FOR REVIEW	NZ	GT	09.10.24

PRE - Preliminary CA - Council Approval T - Tender CON - Construction

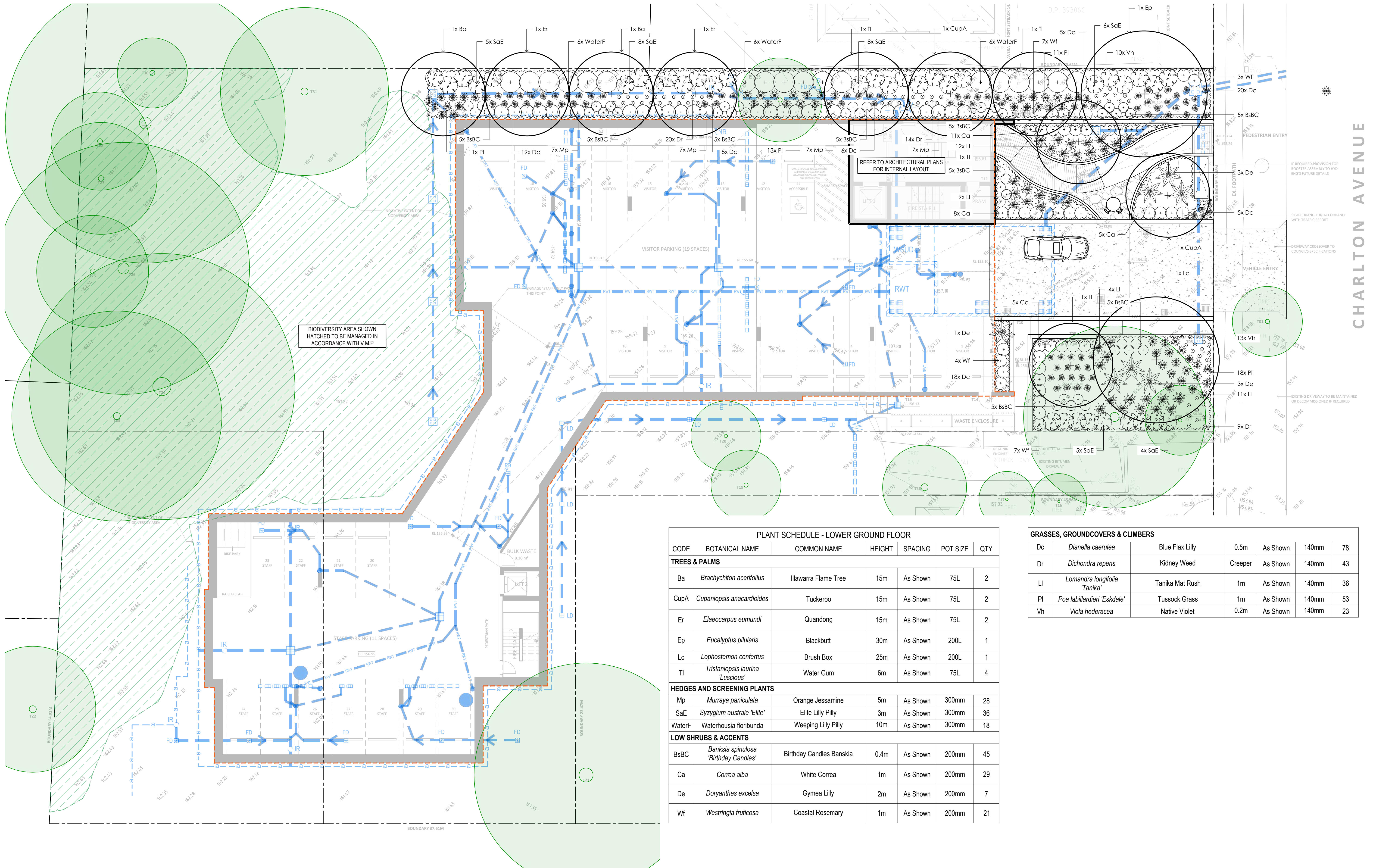




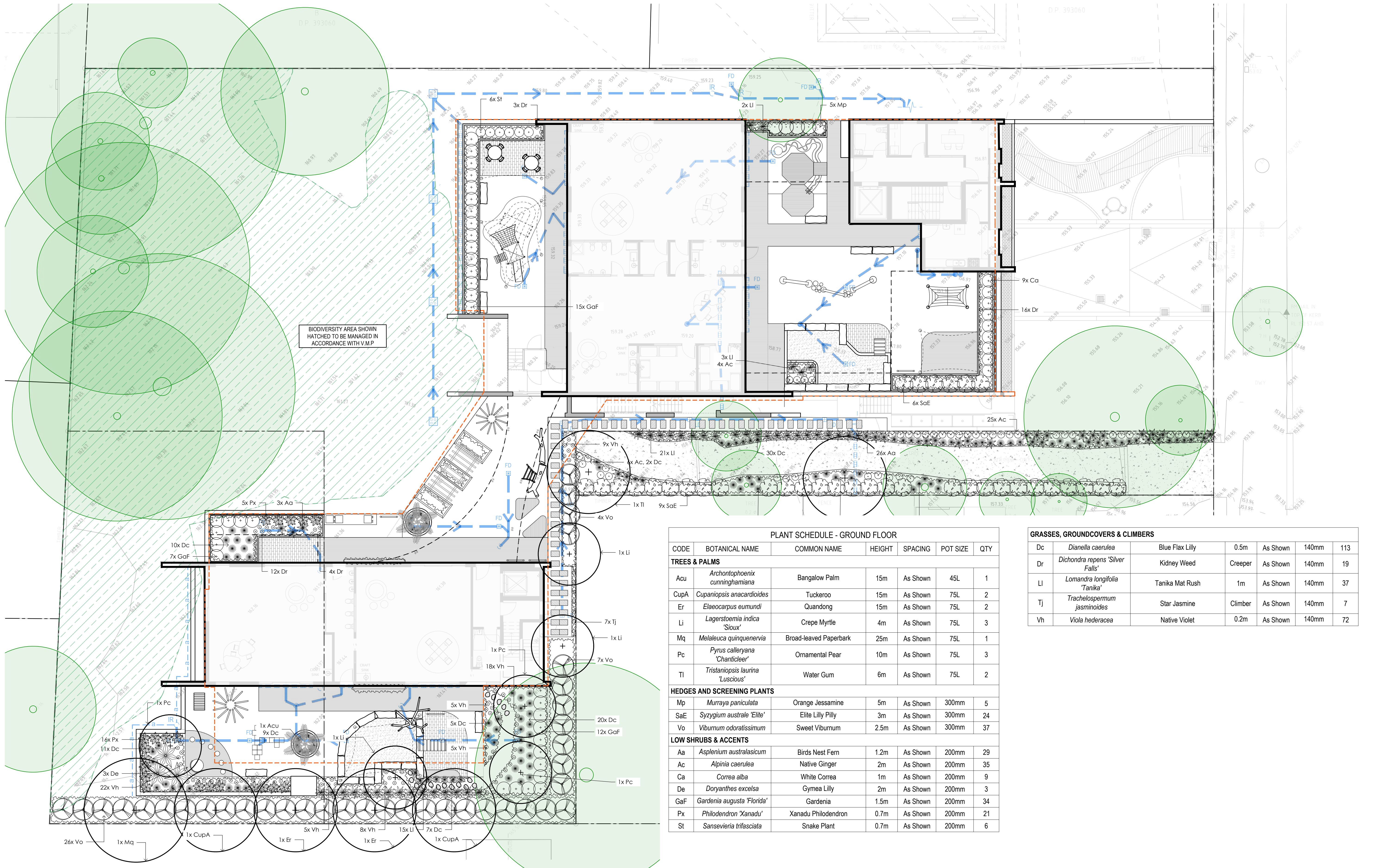




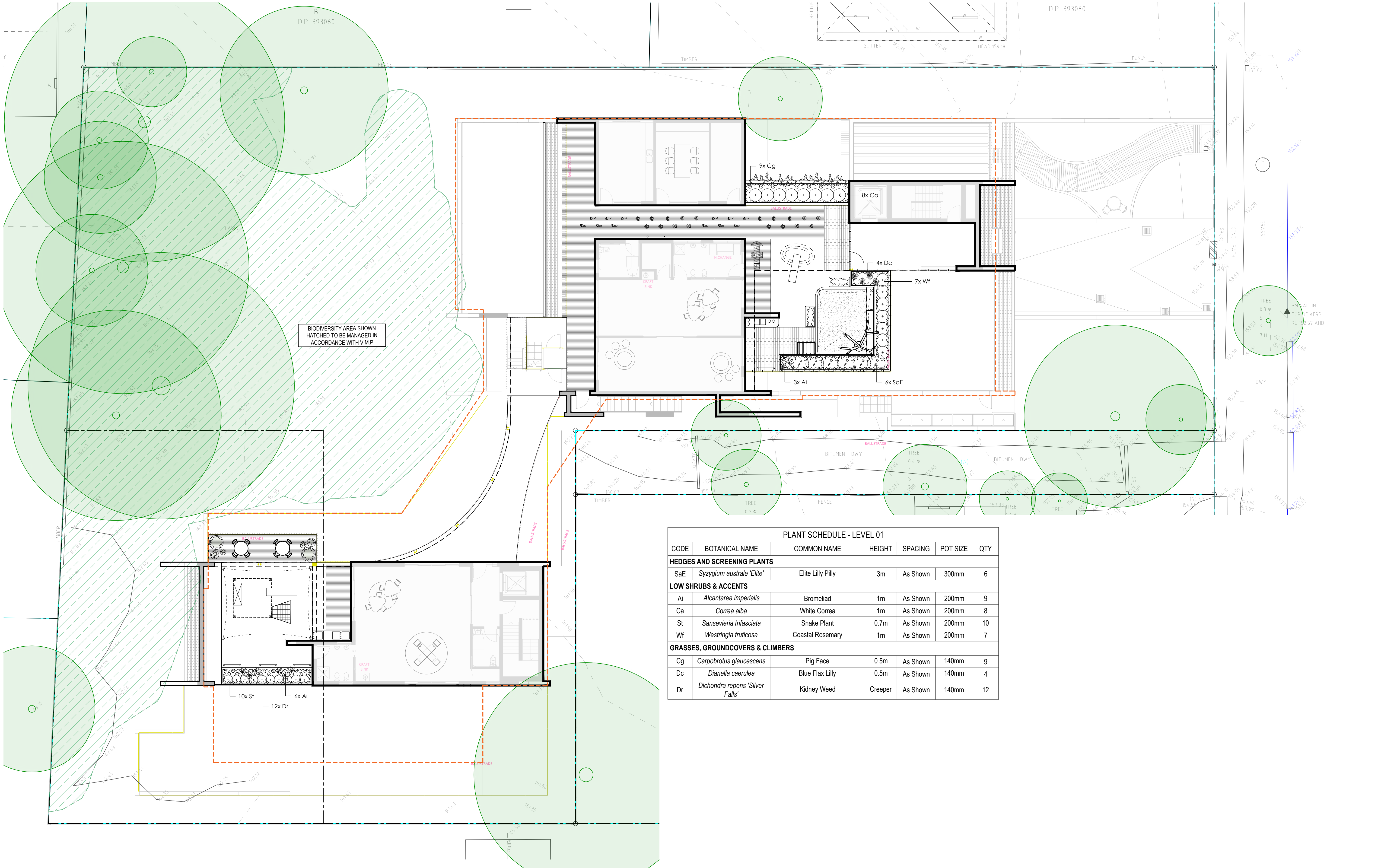




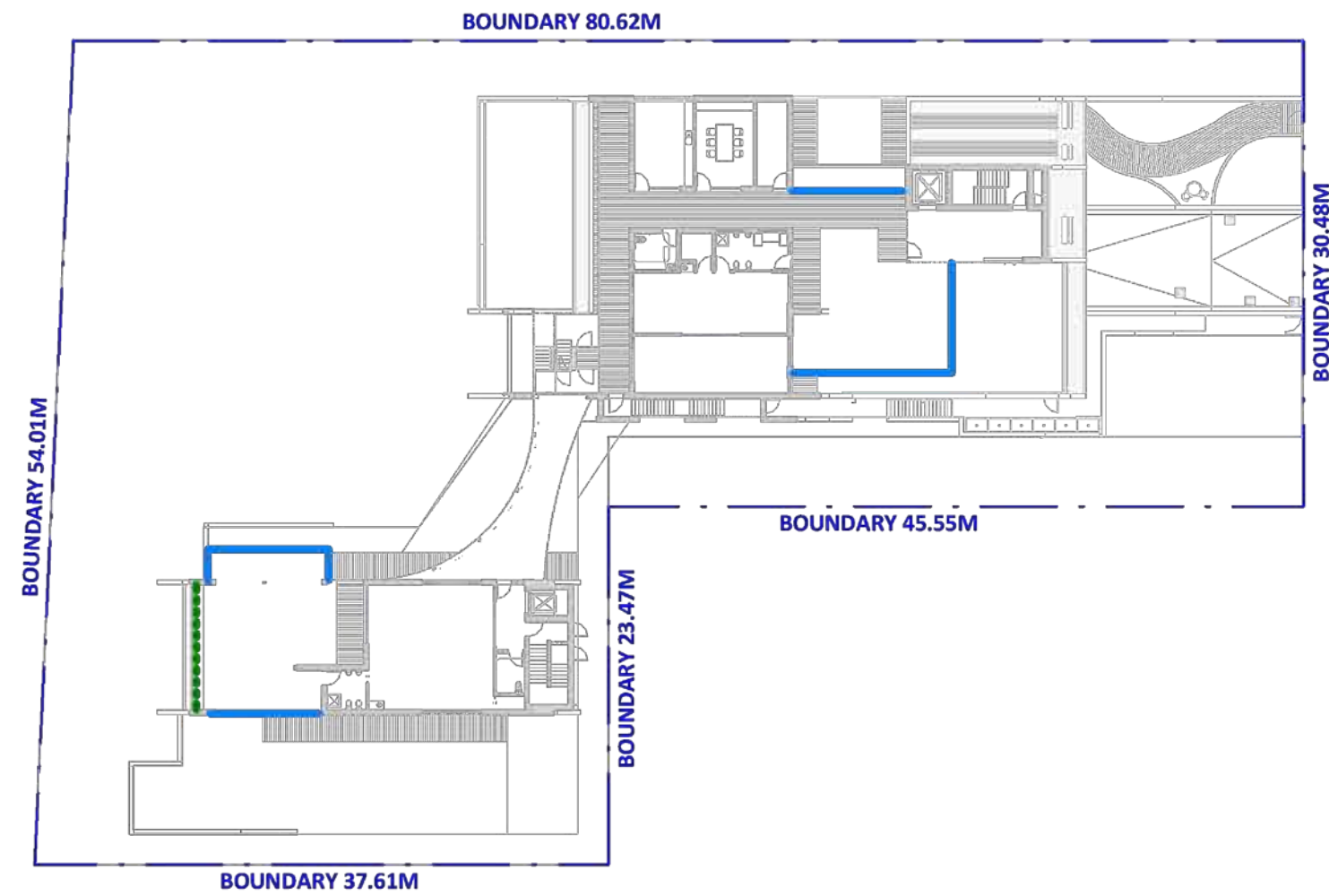












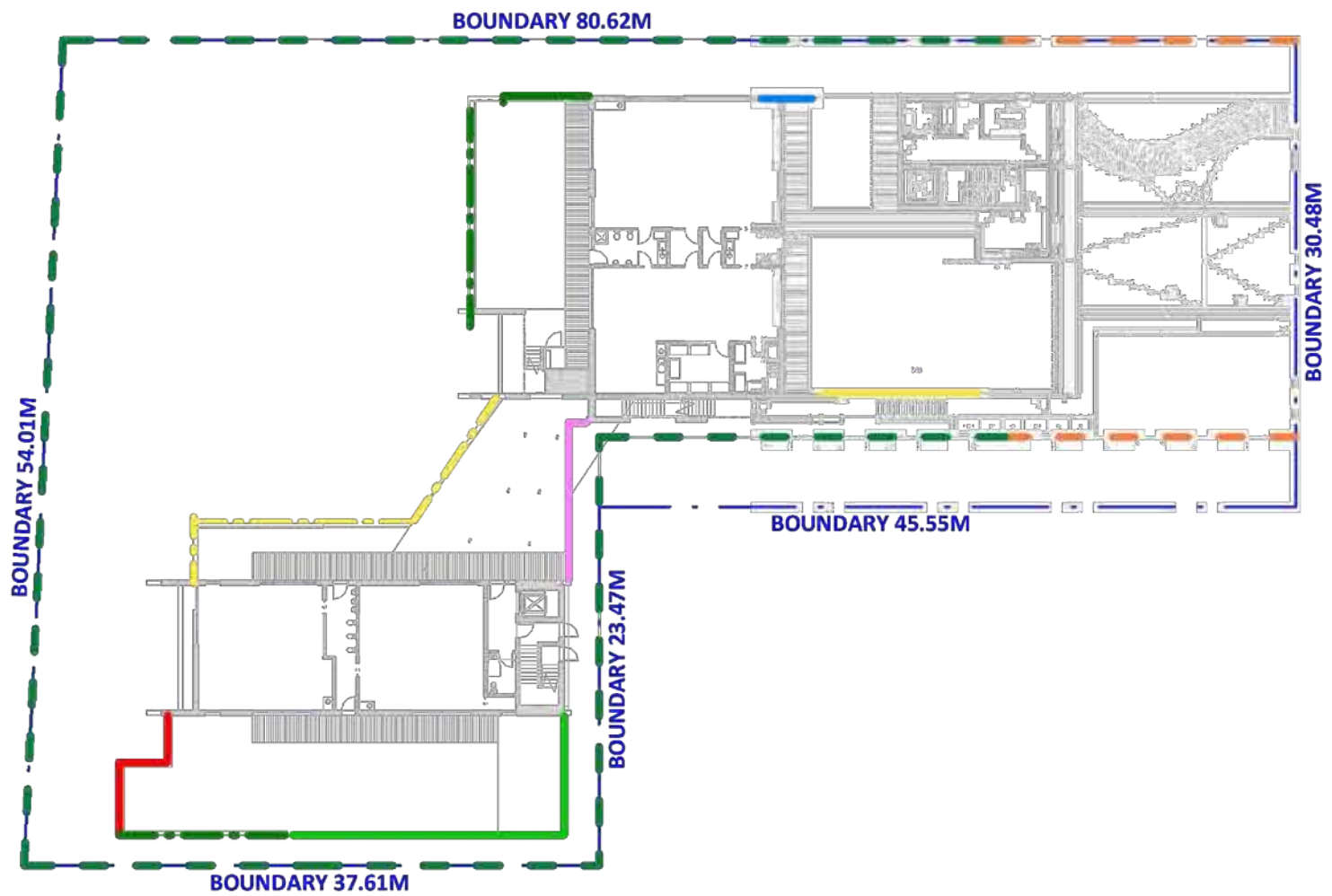
CHARLTON AVENUE

FENCE LEGEND

- 1.2M BOUNDARY FENCE
- 1.39M HT ACOUSTIC BARRIER ABOVE GROUND LEVEL OF OUTDOOR PLAY AREA
- 1.8M HIGH ACOUSTIC BARRIER ABOVE GROUND LEVEL OF OUTDOOR PLAY AREA
- 1.8M HIGH ACOUSTIC BARRIER ABOVE GROUND LEVEL OF OUTDOOR PLAY AREA
- 1.8M HIGH ACOUSTIC BARRIER (ON RETAINING WALL) ABOVE GROUND LEVEL OF OUTDOOR PLAY AREA
- 1.8M HIGH ACOUSTIC BARRIER ABOVE GROUND LEVEL OF OUTDOOR PLAY AREA
- 1.8M BOUNDARY FENCE
- 2.1M HIGH ACOUSTIC BARRIER ABOVE GROUND LEVEL OF OUTDOOR PLAY AREA
- 2.1M HIGH ACOUSTIC BARRIER (ON RETAINING WALL) ABOVE GROUND LEVEL OF OUTDOOR PLAY AREA
- 2.3M HIGH ACOUSTIC BARRIER ABOVE GROUND LEVEL OF OUTDOOR PLAY AREA
- 2.4M HIGH ACOUSTIC BARRIER (ON RETAINING WALL) ABOVE GROUND LEVEL OF OUTDOOR PLAY AREA

NOTE:  
• ALL ACOUSTIC BARRIERS IN ACCORDANCE WITH ACOUSTIC REPORT.

FIRST FLOOR  
FENCING ARRANGEMENT PLAN



CHARLTON AVENUE

FENCE LEGEND

- 1.2M BOUNDARY FENCE
- 1.39M HT ACOUSTIC BARRIER ABOVE GROUND LEVEL OF OUTDOOR PLAY AREA
- 1.8M HIGH ACOUSTIC BARRIER ABOVE GROUND LEVEL OF OUTDOOR PLAY AREA
- 1.8M HIGH ACOUSTIC BARRIER ABOVE GROUND LEVEL OF OUTDOOR PLAY AREA
- 1.8M HIGH ACOUSTIC BARRIER (ON RETAINING WALL) ABOVE GROUND LEVEL OF OUTDOOR PLAY AREA
- 1.8M HIGH ACOUSTIC BARRIER ABOVE GROUND LEVEL OF OUTDOOR PLAY AREA
- 1.8M BOUNDARY FENCE
- 2.1M HIGH ACOUSTIC BARRIER ABOVE GROUND LEVEL OF OUTDOOR PLAY AREA
- 2.1M HIGH ACOUSTIC BARRIER (ON RETAINING WALL) ABOVE GROUND LEVEL OF OUTDOOR PLAY AREA
- 2.3M HIGH ACOUSTIC BARRIER ABOVE GROUND LEVEL OF OUTDOOR PLAY AREA
- 2.4M HIGH ACOUSTIC BARRIER (ON RETAINING WALL) ABOVE GROUND LEVEL OF OUTDOOR PLAY AREA

NOTE:  
• ALL ACOUSTIC BARRIERS IN ACCORDANCE WITH ACOUSTIC REPORT.

GROUND FLOOR  
FENCING ARRANGEMENT PLAN

NOTE: REFER TO ENVIRONMENTAL NOISE IMPACT ASSESSMENT REPORT & ARCHITECTURAL PLANS FOR ADDITIONAL INFORMATION

Issue	Code	Issue Description	By	Chk	Date
C	CA	RFI UPDATES	NZ	GT	22.09.25
B	CA	FOR APPROVAL	NZ	GT	25.10.24
A	CA	FOR REVIEW	NZ	GT	09.10.24
PRE - Preliminary CA - Council Approval T - Tender CON - Construction					

PROJECT

PROPOSED CHILDCARE CENTRE  
8 CHARLTON AVENUE,  
TURRAMURRA

DRAWING TITLE

FENCING ARRANGEMENT  
PLAN

CLIENT

WAKEFIELD  
INTERNATIONAL  
BUSINESS SCHOOL

Drawn : NZ  
Designed : NZ  
Project No. : G721

SHEET NUMBER  
G721\_LP\_09  
REVISION  
C



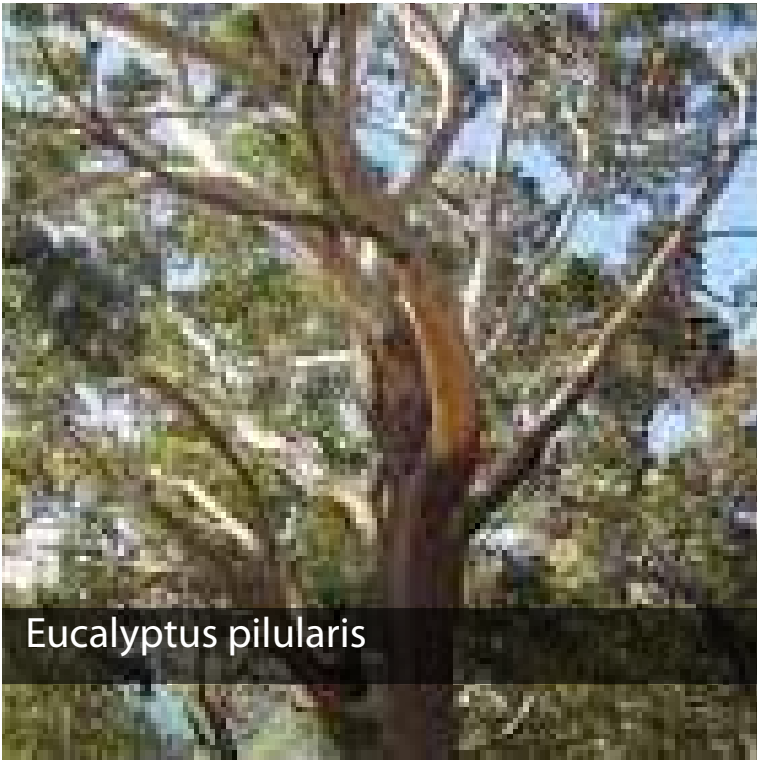




CANOPY TREES



Elaeocarpus reticulatus



Eucalyptus pilularis



Hymenosporum flavum



Lagerstoemia indica 'Sioux'



Lophostemon confertus



Melaleuca quinquenervia

SCREENING TREES & SHRUBS



Pyrus calleryana 'Chanticleer'



Tristania laurina 'Luscious'



Murraya paniculata



Syzygium australe 'Elite'



Viburnum odoratissimum



Asplenium australasicum



Alpinia caerulea

SHRUBS & ACCENTS



Doryanthes excelsa



Gardenia augusta 'Florida'



Philodendron 'Xanadu'



Sansevieria trifasciata



Westringia fruticosa



Dianella caerulea



Dichondra repens 'Silver Falls'

GRASSES & GROUNDCOVERS



Lomandra longifolia 'Tanika'



Poa labillardieri 'Eskdale'



Trachelospermum jasminoides



Viola hederacea



REVISION  
C



